



# Understanding the potential health impact of the proposed Lower Thames Crossing

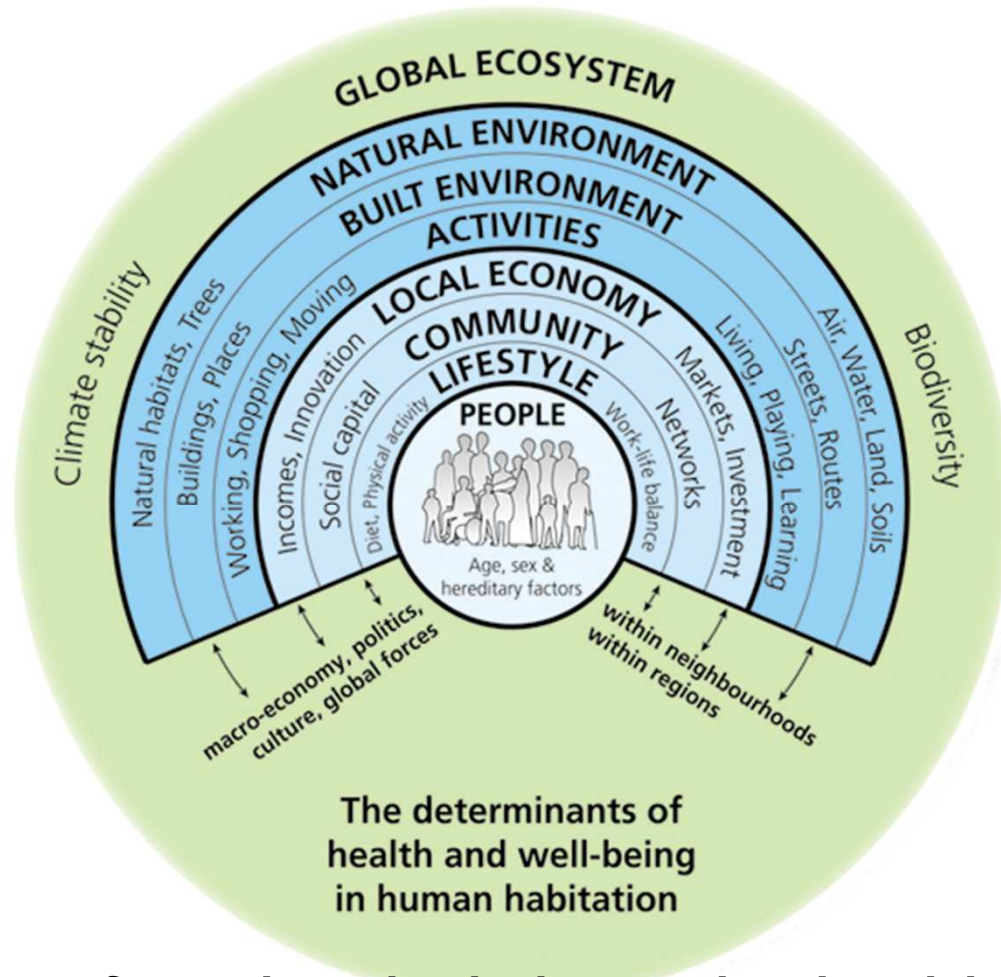
Ian Wake, Director of Public Health



# Overview

- 1. What is health?**
- 2. Local health issues**
- 3. Health Impact Assessment**
- 4. Mitigation**

# What is health?



***“Health is a state of complete physical, mental and social well-being and not merely the absence of disease or infirmity”.***





## Environmental Impact Assessment (EIA)

### EIA

- Environmental impacts on health
- Looks only at risks to health in the context of the environment
- Does not consider interplay between environmental health risks and local health variation

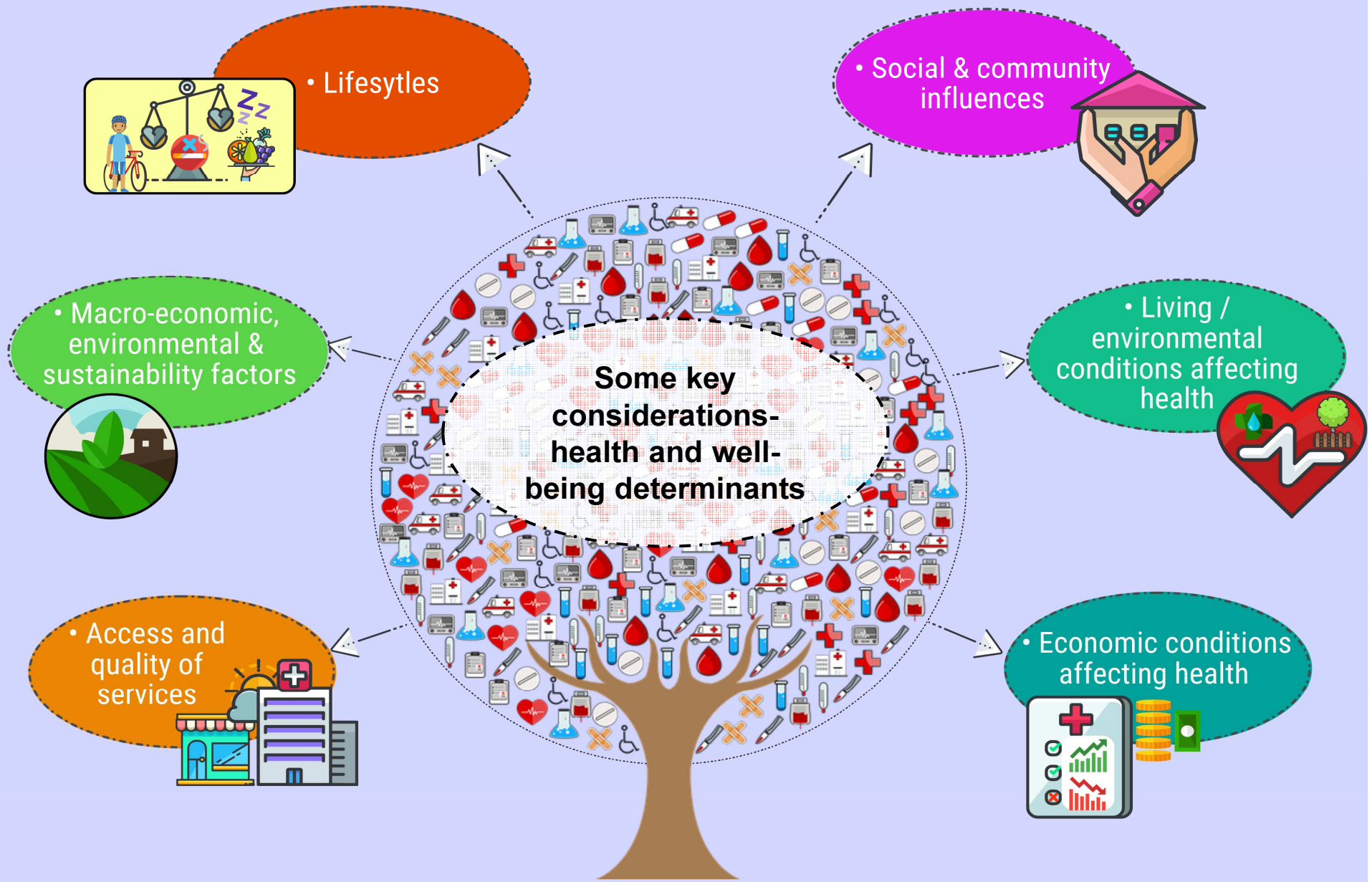


## Health Impact Assessment (HIA)

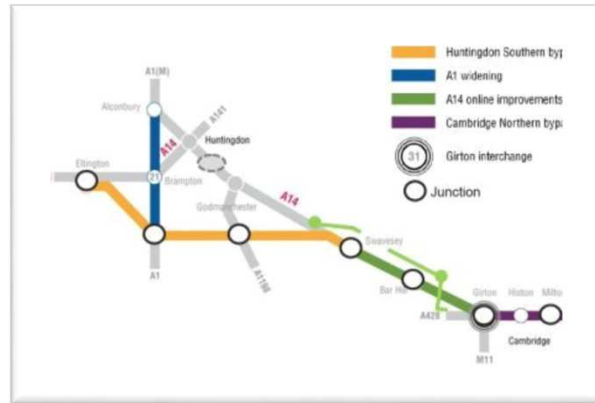
### HIA

- Procedures, methods and tools to judge potential impact on health
- Fundamental starting point is holistic view of health
- Interplay between broadest range of factors and granularity local health variations
  - Health inequalities





# Health Impact Assessment: Precedent



A14 Cambridge to Huntingdon Improvement Scheme



M4 Smart Motorway



M25 Wisley Interchange



Silvertown Tunnel

# Health Impact Assessment

*'Instead of being seen as a health issue, pollution is often seen primarily as an environmental problem. This needs to change. As a society we need to regain the focus on pollution as a threat to human health.'*

**Chief Medical Officer for England,  
2017**

*HIA assists the design and planning of a scheme or project and will bring together information relating to effects on human health from various other topic assessments within the ES. It is increasingly seen as a beneficial method to support efforts to improve health and address health inequalities and in also meeting stakeholder expectations"*

**Highways England, 2014**



# Opportunities for Mitigation



This page is intentionally left blank